
Membership Form 2009/2010

Name	
Email	
Mobile No	
Tel No	
Address	

Individual R70
Family R100

Please post this to the address below, or hand it in to a member with the membership fee You can also find the form online at www.capecentre.org.za

CAPE CENTRE
PO Box 13018
Mowbray
7705
Phone: 0881231634
E-mail: capecentre@gmail.com
www.capecentre.org.za

ASTRONOMY

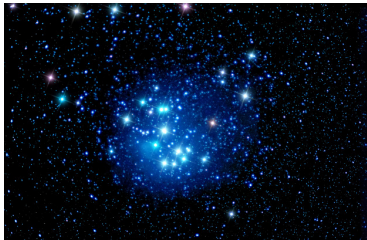


Become a member of the
Cape Centre: your local
Astronomy Society

www.capecentre.org.za



The Cape Centre

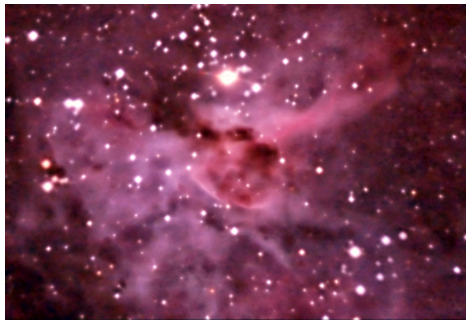


Astronomy is a fascinating subject, and like many other interests it's better to enjoy it in the company of

other people. Come along to your local Astronomy Society and find out more. You don't need any special equipment or background.

We hold weekly meetings, have regular dark sky outings, and go on trips to places of astronomical interest. Take advantage of our library, newsletter, and telescopes for rental.

We are delighted to share our knowledge and enthusiasm, and you don't need anything more than an interest in astronomy.



Pictures on this page taken by Dany Duprez, one of our members. Top is the Pleiades, above the centre of Eta Carinae.

WHERE AND WHEN DO WE MEET?

You are most welcome to come along on any **Wednesday night at 8pm** to the auditorium at the South African Astronomical Observatory (SAAO) here in Cape Town. This is next to the River Club on Observatory Road, just off Liesbeek Parkway.

Each Wednesday night there is some sort of event. Usually this is a talk, sometimes a film or a teach-in session. Once a month we have a Dark Sky observing night, and we have frequent trips to astronomical sites.

The McClean Building housing the old Victoria telescope at the SAAO

Kechil Kirkham



CAPE CENTRE

PO Box 13018
Mowbray
7705

Phone: 088 123 1634
E-mail: capecentre@gmail.com
www.capecentre.org.za

ASTRONOMY SOCIETY OF SOUTHERN AFRICA (ASSA)

You may have heard of ASSA. This is the umbrella organisation for many astronomy societies in southern Africa. The Cape Centre is the local branch of ASSA, and we are soon going to be celebrating our centenary, in 2012. ASSA represents the interests of astronomers on an international platform, and comprises members who are both professionals and enthusiasts. Each year ASSA produces the Sky Guide, Africa South which is indispensable for astronomers in the southern hemisphere. Most resources, both printed and on the Internet, serve the different skies of the northern hemisphere, so the Sky Guide is a great companion for us in Cape Town. It also produces an informative bi-monthly review, MNASSA.

By joining the Cape Centre you are automatically a member of ASSA.



A lunar eclipse caught by ASSA member Case Rijdsdijk